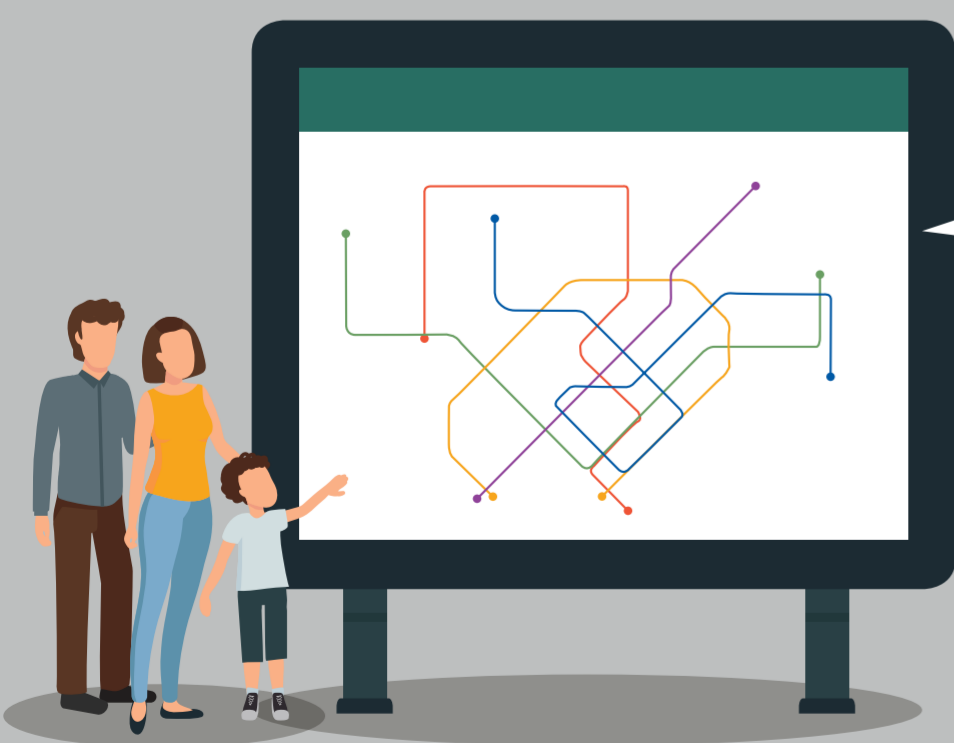


CHANGES TO **EWL** OPERATING HOURS FROM 2 MARCH TO 1 APRIL 2018

All **East-West Line** MRT stations from **Pasir Ris** to **Tuas Link**, and from **Tanah Merah** to **Changi Airport**, will have their operating hours shortened

Early closures at 10.30pm	Early closures at 11.00pm	Late openings at 8.00am
MONDAY 12 Mar	FRIDAY 2, 9, 16, 23, 30 Mar	SATURDAY 3, 10, 17, 24, 31 Mar
WEDNESDAY 14 Mar	SATURDAY 3, 10, 17, 24, 31 Mar	SUNDAY 4, 11, 18, 25 Mar, 1 Apr

Note: There will be no full-day Sunday closures from 2 March to 1 April 2018



Please plan your journey ahead using alternative transport



Scan the following QR code or visit our Passenger Service Centre for more details on shuttle bus services and shortened operating hours

Appendix A-1

Last train timings on the East-West Line on Fridays and Saturdays from 2 March to 1 April 2018.

Between Tuas Link and Pasir Ris MRT stations

Station		Last east-bound train service (hrs)	Last west-bound train service (hrs)
EW33	Tuas Link	2230	0010 (arr)
EW32	Tuas West Road	2233	0007
EW31	Tuas Crescent	2236	0004
EW30	Gul Circle	2239*	0002*
EW29	Joo Koon	2230*	2342*
EW28	Pioneer	2234	2339
EW27	Boon Lay	2236	2337
EW26	Lakeside	2238	2334
EW25	Chinese Garden	2241	2332
EW24	Jurong East	2243	2329
EW23	Clementi	2248	2325
EW22	Dover	2250	2322
EW21	Buona Vista	2253	2320
EW20	Commonwealth	2255	2317
EW19	Queenstown	2257	2315
EW18	Redhill	2259	2312
EW17	Tiong Bahru	2302	2310
EW16	Outram Park	2304	2307
EW15	Tanjong Pagar	2307	2305
EW14	Raffles Place	2309	2303
EW13	City Hall	2312	2301
EW12	Bugis	2314	2258
EW11	Lavender	2316	2256
EW10	Kallang	2318	2254
EW9	Aljunied	2321	2251
EW8	Paya Lebar	2323	2249
EW7	Eunos	2325	2247
EW6	Kembangan	2328	2245
EW5	Bedok	2331	2242
EW4	Tanah Merah(Int)	2334	2239
EW3	Simei	2337	2236
EW2	Tampines	2339	2233
EW1	Pasir Ris	2342 (arr)	2230

* Est 20mins for transfer via bus service between Gul Circle and Joo Koon

Between Tanah Merah and Changi Airport MRT stations

Station		Last train from Tanah Merah to Changi Airport (hrs)	Last train from Changi Airport to Tanah Merah (hrs)
CG	Tanah Merah	2338	-
CG1	Expo	2341	2235 (For connection to Tuas Link) 2312 (For connection to Pasir Ris)
CG2	Changi Airport	2346 (arr)	2230 (For connection to Tuas Link) 2306 (For connection to Pasir Ris)

Appendix A-2

Last train timings on the East-West Line on Monday, 12 March and Wednesday, 14 March 2018

Between Tuas Link and Pasir Ris MRT stations

Station		Last east-bound train service (hrs)	Last west-bound train service (hrs)
EW33	Tuas Link	2200	2340 (arr)
EW32	Tuas West Road	2203	2337
EW31	Tuas Crescent	2206	2334
EW30	Gul Circle	2209*	2332*
EW29	Joo Koon	2200*	2312*
EW28	Pioneer	2204	2309
EW27	Boon Lay	2206	2307
EW26	Lakeside	2208	2304
EW25	Chinese Garden	2211	2302
EW24	Jurong East	2213	2259
EW23	Clementi	2218	2255
EW22	Dover	2220	2252
EW21	Buona Vista	2223	2250
EW20	Commonwealth	2225	2247
EW19	Queenstown	2227	2245
EW18	Redhill	2229	2242
EW17	Tiong Bahru	2232	2240
EW16	Outram Park	2234	2237
EW15	Tanjong Pagar	2237	2235
EW14	Raffles Place	2239	2233
EW13	City Hall	2242	2231
EW12	Bugis	2244	2228
EW11	Lavender	2246	2226
EW10	Kallang	2248	2224
EW9	Aljunied	2251	2221
EW8	Paya Lebar	2253	2219
EW7	Eunos	2255	2217
EW6	Kembangan	2258	2215
EW5	Bedok	2301	2212
EW4	Tanah Merah (Int)	2304	2209
EW3	Simei	2307	2206
EW2	Tampines	2309	2203
EW1	Pasir Ris	2312 (arr)	2200

* Est 20mins for transfer via bus service between Gul Circle and Joo Koon

Between Tanah Merah and Changi Airport MRT stations

Station		Last train from Tanah Merah to Changi Airport (hrs)	Last train from Changi Airport to Tanah Merah (hrs)
CG	Tanah Merah	2304	-
CG1	Expo	2307	2205 (For connection to Tuas Link) 2247 (For connection to Pasir Ris)
CG2	Changi Airport	2312 (arr)	2200 (For connection to Tuas Link)

Appendix A-3**First train timings on the East-West Line on Saturdays and Sundays, 2 March to 1 April 2018**Between Tuas Link and Pasir Ris MRT stations

Station		First east-bound train service (hrs)	First west-bound train service (hrs)
EW33	Tuas Link	0802	0825 (arr)
EW32	Tuas West Road	0805	0822
EW31	Tuas Crescent	0807	0820
EW30	Gul Circle	0810*	0817*
EW29	Joo Koon	0820*	0818*
EW28	Pioneer	0823	0814
EW27	Boon Lay	0810	0812
EW26	Lakeside	0813	0809
EW25	Chinese Garden	0815	0806
EW24	Jurong East	0817	0803
EW23	Clementi	0802	0842
EW22	Dover	0805	0839
EW21	Buona Vista	0807	0837
EW20	Commonwealth	0809	0835
EW19	Queenstown	0811	0832
EW18	Redhill	0814	0830
EW17	Tiong Bahru	0816	0828
EW16	Outram Park	0819	0830
EW15	Tanjong Pagar	0820	0828
EW14	Raffles Place	0823	0826
EW13	City Hall	0825	0824
EW12	Bugis	0827	0821
EW11	Lavender	0829	0819
EW10	Kallang	0831	0817
EW9	Aljunied	0833	0815
EW8	Paya Lebar	0835	0813
EW7	Eunos	0838	0811
EW6	Kembangan	0841	0809
EW5	Bedok	0844	0806
EW4	Tanah Merah (Int)	0804	0802
EW3	Simei	0808	0825
EW2	Tampines	0811	0822
EW1	Pasir Ris	0814 (arr)	0818

* Est 20mins for transfer via bus service between Gul Circle and Joo Koon

Between Tanah Merah and Changi Airport MRT stations

Station		First train from Tanah Merah to Changi Airport (hrs)	First train from Changi Airport to Tanah Merah (hrs)
CG	Tanah Merah	0807	0827 (arr)
CG1	Expo	0810	0824
CG2	Changi Airport	0815 (arr)	0819

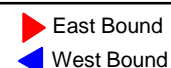
SHUTTLE 1

BUONA VISTA – RAFFLES PLACE (BOTH BOUNDS)

EAST-WEST LINE

Every Friday, Saturday & Sunday from 2 Mar 2018 to 1 Apr 2018
and on 12 Mar 2018 (Monday) & 14 Mar 2018 (Wednesday)

Shuttle 1 will serve the following bus stops:



Buona Vista Stn Exit C BS 11361	C'Vealth Stn Exit B/C BS 11169	Queenstown Stn Exit B/C BS 11149	Redhill Stn BS 10209	Tiong Bahru Plaza BS 10169	Outram Pk Stn BS 06029	International Plaza BS 03223	The Sail BS 03381
Buona Vista	Commonwealth	Queenstown	Redhill	Tiong Bahru	Outram Park	Tanjong Pagar	Raffles Place
Buona Vista Stn Exit D BS 11369	C'Vealth Stn Exit A/D BS 11161	Queenstown Stn Exit A/D BS 11141	Opp Redhill Stn BS 10201	Opp Tiong Bahru Plaza BS 10161	Outram Pk Stn Exit F/SGH BS 10018	Opp MAS Bldg BS 03218	The Sail BS 03381

Arrival Time of First & Last Bus at Bus Stops on Days of Early Closure & Late Opening

	Fridays & Saturdays (Early Closure at 11.00pm)	Saturdays (Late Opening at 8.00am)	Sundays (Late Opening at 8.00am)	Monday (12 Mar 2018) & Wednesday (14 Mar 2018) (Early Closure at 10.30pm)
East Bound (Towards Raffles Place)				
From	First Bus	Last Bus	First Bus	Last Bus
Buona Vista	10.58pm	1.33am	5.43am	8.07am
Commonwealth	11.00pm	1.38am	5.45am	8.12am
Queenstown	11.02pm	1.41am	5.46am	8.15am
Redhill	11.04pm	1.46am	5.49am	8.20am
Tiong Bahru	11.07pm	1.52am	5.51am	8.26am
Outram Park	11.09pm	1.58am	5.54am	8.32am
Tanjong Pagar	11.12pm	2.04am	5.56am	8.38am
West Bound (Towards Buona Vista)				
From	First Bus	Last Bus	First Bus	Last Bus
Raffles Place	11.08pm	12.19am	5.59am	8.26am
Tanjong Pagar	11.10pm	12.24am	6.02am	8.31am
Outram Park	11.12pm	12.31am	6.04am	8.38am
Tiong Bahru	11.15pm	12.38am	6.07am	8.45am
Redhill	11.17pm	12.43am	6.09am	8.50am
Queenstown	11.20pm	12.48am	6.11am	8.55am
Commonwealth	11.22pm	12.51am	6.13am	8.58am

Information on Shuttle Bus Service

- Shuttle 1 will operate between Buona Vista MRT station and Raffles Place MRT station (both bounds) on the following days:
 - On Fridays and Saturdays at 11.00pm (Early Closure)
 - On Saturdays and Sundays at 8.00am (Late Opening)
 - On 12 and 14 Mar at 10.30pm (Early Closure)
- Frequency of the shuttle bus service is 3 – 10 minutes
- Fares for shuttle bus services will follow the same fare structure as trains
- Commuters planning to connect to train services at Buona Vista MRT station (CCL), Outram Park MRT station (NEL) and Raffles Place MRT station (NSL) are advised to check train services timings, as the shuttle bus service may not connect to the last train departing the station



Information is correct at time of print.
For information on shuttle bus services, please contact the SMRT Customer Hotline at 1800-336-8900 from 7.30am to 8.00pm daily.
Passengers may also approach the service staff on site or visit www.smrt.com.sg for more details.

SHUTTLE 2 JOO KOON – BUONA VISTA (BOTH BOUNDS) EAST-WEST LINE

Every Friday, Saturday & Sunday from 2 Mar 2018 to 1 Apr 2018
and on 12 Mar 2018 (Monday) & 14 Mar 2018 (Wednesday)

Shuttle 2 will serve the following bus stops:

East Bound
 West Bound

Joo Koon Stn Exit B BS 23491	Pioneer Stn Exit B BS 22529	Boon Lay Stn BS 22579	Opp Lakeside Stn BS 28099	Opp Chinese Gdn Stn BS 28349	Jurong East Temp Int BS 28009	Clementi Stn Exit B BS 17179	Dover Stn Exit B BS 19039	Buona Vista Stn Exit C BS 11361
Joo Koon	Pioneer	Boon Lay	Lakeside	Chinese Garden	Jurong East	Clementi	Dover	Buona Vista
Joo Koon Stn Exit A BS 23499	Pioneer Stn Exit A BS 22521	Opp Boon Lay Stn BS 22571	Pick-up & Drop-off point outside Lakeside Stn	Chinese Gdn Stn BS 28341	Bus drop-off point at Venture Avenue (Opp Big Box)	Clementi Stn Exit A BS 17171	Dover Stn Exit A BS 19031	Pick-up & Drop- off point after Buona Vista Stn Exit D

Arrival Time of First & Last Bus at Bus Stops on Days of Early Closure & Late Opening

	Fridays & Saturdays (Early Closure at 11.00pm)		Saturdays (Late Opening at 8.00am)		Sundays (Late Opening at 8.00am)		Monday (12 Mar 2018) & Wednesday (14 Mar 2018) (Early Closure at 10.30pm)	
East Bound (Towards Buona Vista)								
From	First Bus	Last Bus	First Bus	Last Bus	First Bus	Last Bus	First Bus	Last Bus
Joo Koon	10.35pm	11.54pm	5.31am	8.20am	6.01am	8.20am	10.05pm	11.54pm
Pioneer	10.39pm	12.03am	5.34am	8.29am	6.04am	8.29am	10.09pm	12.03am
Boon Lay	10.41pm	12.09am	5.36am	8.35am	6.06am	8.35am	10.11pm	12.09am
Lakeside	10.43pm	12.15am	5.38am	8.41am	6.08am	8.41am	10.13pm	12.15am
Chinese Garden	10.46pm	12.21am	5.40am	8.47am	6.10am	8.47am	10.16pm	12.21am
Jurong East	10.48pm	1.08am*	5.43am	8.54am	6.13am	8.54am	10.18pm	1.08am*
Clementi	10.53pm	1.19am	5.38am	9.05am	6.06am	9.05am	10.23pm	1.19am
Dover	10.55pm	1.25am	5.40am	9.11am	6.08am	9.11am	10.25pm	1.25am
West Bound (Towards Joo Koon)								
From	First Bus	Last Bus	First Bus	Last Bus	First Bus	Last Bus	First Bus	Last Bus
Buona Vista	11.25pm	12.59am	6.16am	8.37am	6.42am	8.37am	10.55pm	12.59am
Dover	11.27pm	1.08am	6.18am	8.46am	6.44am	8.46am	10.57pm	1.08am
Clementi	11.30pm	1.14am	6.21am	8.52am	6.47am	8.52am	11.00pm	1.14am
Jurong East	11.34pm	1.26am	5.14am	9.04am	5.44am	9.04am	11.04pm	1.26am
Chinese Garden	11.37pm	1.34am	5.17am	9.12am	5.47am	9.12am	11.07pm	1.34am
Lakeside	11.39pm	1.41am	5.19am	9.19am	5.49am	9.19am	11.09pm	1.41am
Boon Lay	11.42pm	1.48am	5.21am	9.26am	5.51am	9.26am	11.12pm	1.48am
Pioneer	11.44pm	1.53am	5.23am	9.31am	5.53am	9.31am	11.14pm	1.53am

Information on Shuttle Bus Service

- Shuttle 2 will operate between Joo Koon MRT station and Buona Vista MRT station (both bounds) on the following days:
 - On Fridays and Saturdays at 11.00pm (Early Closure)
 - On Saturdays and Sundays at 8.00am (Late Opening)
 - On 12 and 14 Mar at 10.30pm (Early Closure)
- Frequency of the shuttle bus service is 3 – 10 minutes
- Fares for shuttle bus services will follow the same fare structure as trains
- Commuters planning to connect to train services at Buona Vista MRT Station (CCL) and Jurong East MRT Station (NSL) are advised to check train services timings, as the shuttle bus service may not connect to the last train departing the station

* For connection with the North-South Line at Jurong East MRT Station, the last bus from Jurong East to Buona Vista will depart at 1.08am



Information is correct at time of print.
For information on shuttle bus services, please contact the SMRT Customer Hotline at 1800-336-8900 from 7.30am to 8.00pm daily.
Passengers may also approach the service staff on site or visit www.smrt.com.sg for more details.

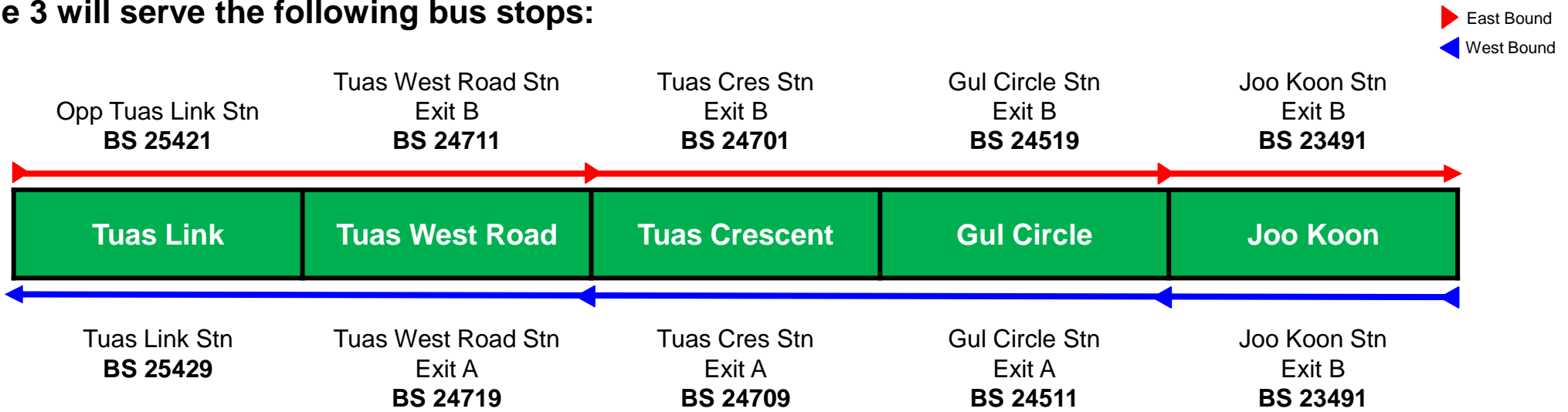
SHUTTLE 3

TUAS LINK – JOO KOON (BOTH BOUNDS)

EAST-WEST LINE

Every Friday, Saturday & Sunday from 2 Mar 2018 to 1 Apr 2018
and on 12 Mar 2018 (Monday) & 14 Mar 2018 (Wednesday)

Shuttle 3 will serve the following bus stops:



Arrival Time of First & Last Bus at Bus Stops on Days of Early Closure & Late Opening

	Fridays & Saturdays (Early Closure at 11.00pm)	Saturdays (Late Opening at 8.00am)	Sundays (Late Opening at 8.00am)	Monday (12 Mar 2018) & Wednesday (14 Mar 2018) (Early Closure at 10.30pm)				
East Bound (Towards Joo Koon)								
From	First Bus	Last Bus	First Bus	Last Bus	First Bus	Last Bus	First Bus	Last Bus
Tuas Link	10.35pm	11.20pm	5.19am	8.02am	5.49am	8.02am	10.05pm	11.20pm
Tuas West Rd	10.40pm	11.25pm	5.21am	8.07am	5.51am	8.07am	10.10pm	11.25pm
Tuas Crescent	10.44pm	11.29pm	5.23am	8.12am	5.53am	8.11am	10.15pm	11.30pm
Gul Circle	10.49pm	11.34pm	5.26am	8.19am	5.56am	8.16am	10.22pm	11.37pm
West Bound (Towards Tuas Link)								
From	First Bus	Last Bus	First Bus	Last Bus	First Bus	Last Bus	First Bus	Last Bus
Joo Koon	11.47pm	2.07am	5.27am	8.18am	5.57am	8.17am	11.17pm	2.05am
Gul Circle	11.56pm	2.16am	5.30am	8.28am	6.00am	8.26am	11.27pm	2.15am
Tuas Crescent	12.01am	2.21am	5.32am	8.35am	6.02am	8.31am	11.34pm	2.22am
Tuas West Rd	12.05am	2.25am	5.34am	8.40am	6.04am	8.35am	11.39pm	2.27am

Information on Shuttle Bus Service

- Shuttle 3 will operate between Tuas Link MRT station and Joo Koon MRT station (both bounds) on the following days:
 - On Fridays and Saturdays at 11.00pm (Early Closure)
 - On Saturdays and Sundays at 8.00am (Late Opening)
 - On the 12 and 14 Mar at 10.30pm (Early Closure)
- Frequency of the shuttle bus service is 3 – 15 minutes
- Fares for shuttle bus services will follow the same fare structure as trains
- Commuters planning to connect to train services at Jurong East MRT station (NSL) are advised to check train services timings, as the shuttle bus service may not connect to the last train departing the station

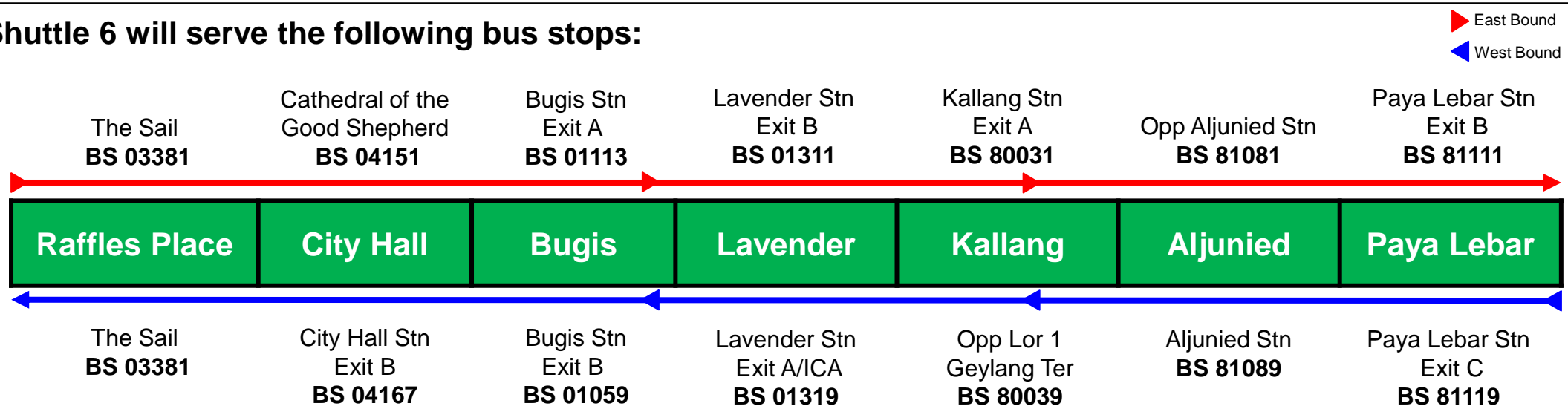


! Information is correct at time of print.
For information on shuttle bus services, please contact the SMRT Customer Hotline at 1800-336-8900 from 7.30am to 8.00pm daily.
Passengers may also approach the service staff on site or visit www.smrt.com.sg for more details.

SHUTTLE 6 RAFFLES PLACE – PAYA LEBAR (BOTH BOUNDS) EAST-WEST LINE

Every Friday, Saturday & Sunday from 2 Mar 2018 to 1 Apr 2018
and on 12 Mar 2018 (Monday) & 14 Mar 2018 (Wednesday)

Shuttle 6 will serve the following bus stops:



Arrival Time of First & Last Bus at Bus Stops on Days of Early Closure & Late Opening

	Fridays & Saturdays (Early Closure at 11.00pm)		Saturdays (Late Opening at 8.00am)		Sundays (Late Opening at 8.00am)		Monday (12 Mar 2018) & Wednesday (14 Mar 2018) (Early Closure at 10.30pm)	
East Bound (Towards Paya Lebar)								
From	First Bus	Last Bus	First Bus	Last Bus	First Bus	Last Bus	First Bus	Last Bus
Raffles Place	11.14pm	12.19am	5.59am	8.23am	6.27am	8.23am	10.44pm	12.19am
City Hall	11.17pm	12.28am	6.01am	8.32am	6.29am	8.32am	10.47pm	12.28am
Bugis	11.19pm	12.32am	6.03am	8.36am	6.31am	8.36am	10.49pm	12.32am
Lavender	11.21pm	12.37am	6.05am	8.41am	6.33am	8.41am	10.51pm	12.37am
Kallang	11.23pm	12.42am	6.07am	8.46am	6.35am	8.46am	10.53pm	12.42am
Aljunied	11.26pm	12.47am	6.09am	8.51am	6.37am	8.51am	10.56pm	12.47am
West Bound (Towards Raffles Place)								
From	First Bus	Last Bus	First Bus	Last Bus	First Bus	Last Bus	First Bus	Last Bus
Paya Lebar	10.54pm	1.18am	5.46am	8.13am	6.12am	8.13am	10.24pm	1.18am
Aljunied	10.56pm	1.24am	5.48am	8.19am	6.14am	8.19am	10.26pm	1.24am
Kallang	10.59pm	1.30am	5.50am	8.25am	6.16am	8.25am	10.29pm	1.30am
Lavender	11.01pm	1.35am	5.52am	8.30am	6.18am	8.30am	10.31pm	1.35am
Bugis	11.03pm	1.40am	5.54am	8.35am	6.20am	8.35am	10.33pm	1.40am
City Hall	11.06pm	1.45am	5.57am	8.40am	6.24am	8.40am	10.36pm	1.45am

Information on Shuttle Bus Service

- Shuttle 6 will operate between Raffles Place MRT station and Paya Lebar MRT station (both bounds) on the following days:
 - On Fridays and Saturdays at 11.00pm (Early Closure)
 - On Saturdays and Sundays at 8.00am (Late Opening)
 - On 12 and 14 Mar at 10.30pm (Early Closure)
- Frequency of the shuttle bus service is 3 – 10 minutes
- Fares for shuttle bus services will follow the same fare structure as trains
- Commuters planning to connect to train services at Raffles Place MRT station (NSL), Bugis MRT station (DTL) and Paya Lebar MRT station (CCL) are advised to check train services timings, as the shuttle bus service may not connect to the last train departing the station



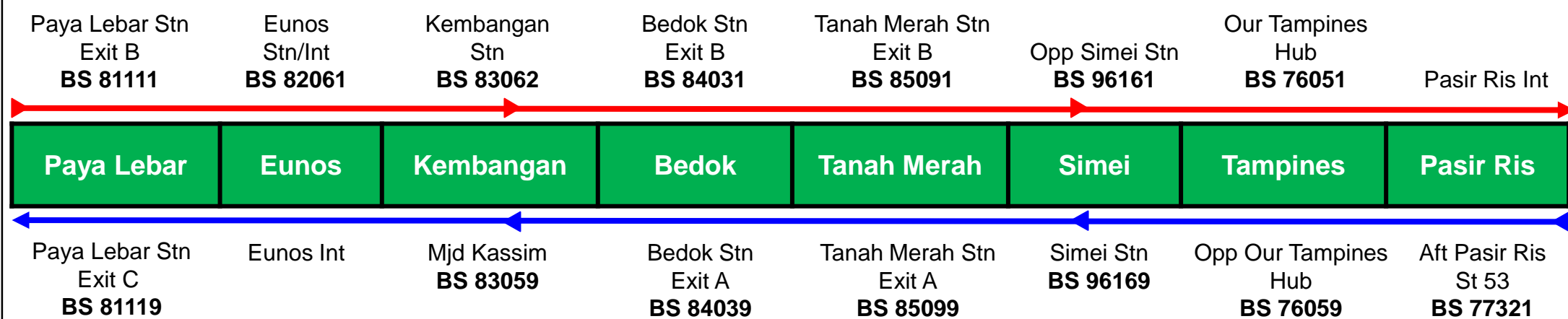
Information is correct at time of print.
For information on shuttle bus services, please contact the SMRT Customer Hotline at 1800-336-8900 from 7.30am to 8.00pm daily.
Passengers may also approach the service staff on site or visit www.smrt.com.sg for more details.

SHUTTLE 7 PAYA LEBAR – PASIR RIS (BOTH BOUNDS) EAST-WEST LINE

Every Friday, Saturday & Sunday from 2 Mar 2018 to 1 Apr 2018
and on 12 Mar 2018 (Monday) & 14 Mar 2018 (Wednesday)

Shuttle 7 will serve the following bus stops:

▶ East Bound
◀ West Bound



Arrival Time of First & Last Bus at Bus Stops on Days of Early Closure & Late Opening

	Fridays & Saturdays (Early Closure at 11.00pm)	Saturdays (Late Opening at 8.00am)	Sundays (Late Opening at 8.00am)	Monday (12 Mar 2018) & Wednesday (14 Mar 2018) (Early Closure at 10.30pm)				
East Bound (Towards Pasir Ris)								
From	First Bus	Last Bus	First Bus	Last Bus	First Bus	Last Bus	First Bus	Last Bus
Paya Lebar	11.28pm	12.56am	6.11am	8.35am	6.39am	8.35am	10.58pm	12.56am
Eunos	11.30pm	1.02am	6.13am	8.41am	6.41am	8.41am	11.00pm	1.02am
Kembangan	11.33pm	1.07am	6.15am	8.46am	6.43am	8.46am	11.03pm	1.07am
Bedok	11.36pm	1.14am	6.18am	8.53am	6.46am	8.53am	11.06pm	1.14am
Tanah Merah	11.39pm	1.21am	5.16am	9.00am	5.42am	9.00am	11.09pm	1.21am
Simei	11.42pm	1.32am	5.19am	9.11am	5.45am	9.11am	11.12pm	1.32am
Tampines	11.44pm	1.42am	5.21am	9.21am	5.47am	9.21am	11.14pm	1.42am
West Bound (Towards Paya Lebar)								
From	First Bus	Last Bus	First Bus	Last Bus	First Bus	Last Bus	First Bus	Last Bus
Pasir Ris	10.35pm	11.33pm	5.28am	8.18am	5.54am	8.18am	10.05pm	11.33pm
Tampines	10.38pm	11.42pm	5.31am	8.27am	5.57am	8.27am	10.08pm	11.42pm
Simei	10.41pm	11.52pm	5.33am	8.37am	5.59am	8.37am	10.11pm	11.52pm
Tanah Merah	10.44pm	12.45am*	5.36am	8.48am	6.02am	8.48am	10.14pm	12.45am*
Bedok	10.47pm	12.56am	5.39am	8.55am	6.05am	8.55am	10.17pm	12.56am
Kembangan	10.50pm	1.02am	5.42am	9.01am	6.08am	9.01am	10.20pm	1.02am
Eunos	10.52pm	1.09am	5.44am	9.08am	6.10am	9.08am	10.22pm	1.09am

Information on Shuttle Bus Service

- Shuttle 7 will operate between Paya Lebar MRT station and Pasir Ris MRT station (both bounds) on the following days:
 - On Fridays and Saturdays at 11.00pm (Early Closure)
 - On Saturdays and Sundays at 8.00am (Late Opening)
 - On 12 and 14 Mar at 10.30pm (Early Closure)
- Frequency of the shuttle bus service is 3 – 10 minutes
- Fares for shuttle bus services will follow the same fare structure as trains
- Commuters planning to connect to train services at Paya Lebar MRT station (CCL) and Tampines MRT station (DTL) are advised to check train services timings, as the shuttle bus service may not connect to the last train departing the station

* The last bus from Tanah Merah to Paya Lebar will depart at 12.45am for connection with Shuttle 8 from Changi Airport



Information is correct at time of print.

For information on shuttle bus services, please contact the SMRT Customer Hotline at 1800-336-8900 from 7.30am to 8.00pm daily. Passengers may also approach the service staff on site or visit www.smrt.com.sg for more details.

SHUTTLE 8

TANAH MERAH – CHANGI AIRPORT (BOTH BOUNDS)

EAST-WEST LINE

Every Friday, Saturday & Sunday from 2 Mar 2018 to 1 Apr 2018
and on 12 Mar 2018 (Monday) & 14 Mar 2018 (Wednesday)

Shuttle 8 will serve the following bus stops:

▶ East Bound
◀ West Bound



Arrival Time of First & Last Bus at Bus Stops on Days of Early Closure & Late Opening

	Fraturdays & Saturdays (Early Closure at 11.00pm)	Saturdays (Late Opening at 8.00am)	Sundays (Late Opening at 8.00am)	Monday (12 Mar 2018) & Wednesday (14 Mar 2018) (Early Closure at 10.30pm)				
East Bound (Towards Changi Airport)								
From	First Bus	Last Bus	First Bus	Last Bus	First Bus	Last Bus	First Bus	Last Bus
Tanah Merah	11.43pm	1.24am	5.25am	8.07am	5.51am	8.07am	11.09pm	1.24am
Expo	11.46pm	1.32am	5.28am	8.15am	5.54am	8.15am	11.12pm	1.32am
West Bound (Towards Tanah Merah)								
From	First Bus	Last Bus	First Bus	Last Bus	First Bus	Last Bus	First Bus	Last Bus
Changi Airport	11.11pm	12.16am	5.36am	8.19am	6.04am	8.19am	10.47pm	12.16am
Expo	11.17pm	12.33am	5.41am	8.36am	6.09am	8.36am	10.52pm	12.33am

Information on Shuttle Bus Service

- Shuttle 8 will operate between Tanah Merah MRT station and Changi Airport T3 (both bounds) on the following days:
 - On Fridays and Saturdays at 11.00pm (Early Closure)
 - On Saturdays and Sundays at 8.00am (Late Opening)
 - On 12 and 14 Mar at 10.30pm (Early Closure)
- Frequency of the shuttle bus service is 3 – 5 minutes
- Fares for shuttle bus services will follow the same fare structure as trains
- Commuters planning to connect to train services at Expo MRT station (DTL) are advised to check train services timings, as the shuttle bus service may not connect to the last train departing the station



Information is correct at time of print.
For information on shuttle bus services, please contact the SMRT Customer Hotline at 1800-336-8900 from 7.30am to 8.00pm daily.
Passengers may also approach the service staff on site or visit www.smrt.com.sg for more details.

EXPRESS 5

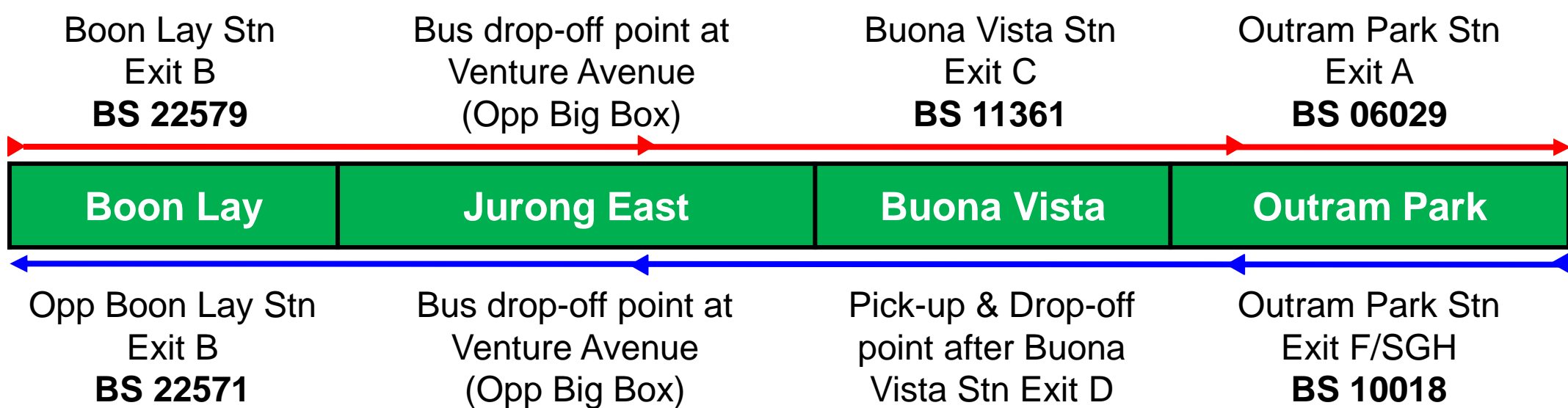
BOON LAY – OUTRAM PARK (BOTH BOUNDS)

EAST-WEST LINE

Every Saturday & Sunday from
2 Mar 2018 to 1 Apr 2018

Express 5 will serve the following bus stops:

▶ East Bound
◀ West Bound



Arrival Time of First & Last Bus at Bus Stops on Days of Late Opening

From	Towards Outram Park		Towards Boon Lay	
	First Bus	Last Bus	First Bus	Last Bus
Boon Lay	5.15am	5.30am	-	-
Jurong East	5.34am	5.49am	6.50am	7.05am
Buona Vista	5.50am	6.05am	6.34am	6.49am
Outram Park	-	-	6.15am	6.30am

Information on Shuttle Bus Service

- Express 5 provides commuters with a faster connectivity between Boon Lay and Outram Park on Saturday and Sunday mornings from 2 Mar to 1 Apr 2018
- Fares for shuttle bus services will follow the same fare structure as trains
- Commuters are advised to plan their journeys ahead and to check train service timings



Information is correct at time of print.

For information on shuttle bus services, please contact the SMRT Customer Hotline at 1800-336-8900 from 7.30am to 8.00pm daily. Passengers may also approach the service staff on site or visit www.smrt.com.sg for more details.

EXPRESS 12

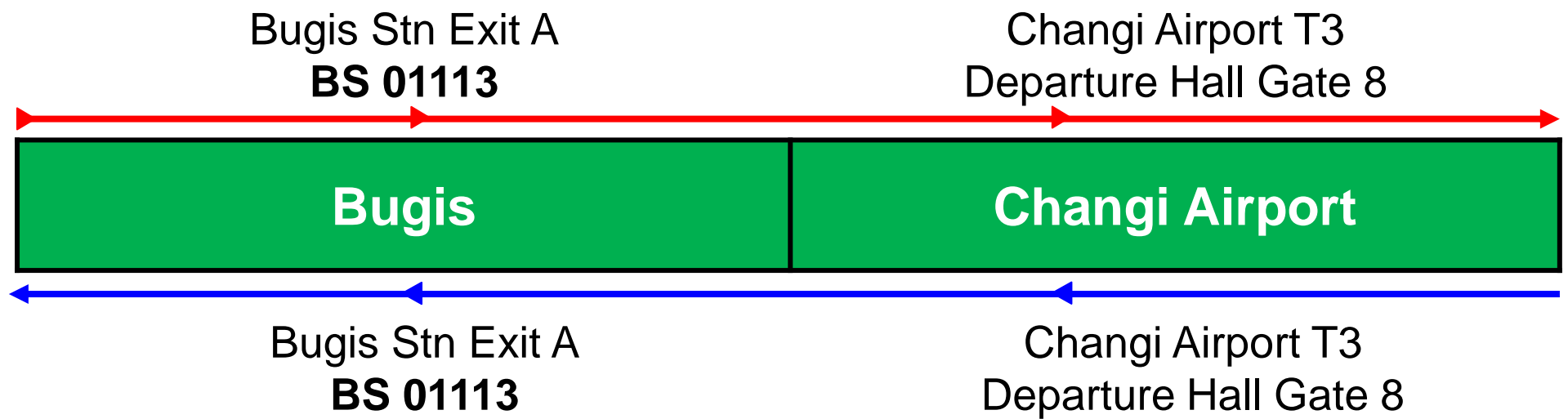
CHANGI AIRPORT – BUGIS (BOTH BOUNDS)

EAST-WEST LINE

Every Friday, Saturday & Sunday from 2 Mar 2018 to 1 Apr 2018
and on 12 Mar 2018 (Monday) & 14 Mar 2018 (Wednesday)

Express 12 will serve the following bus stops:

▶ East Bound
◀ West Bound



Arrival Time of First & Last Bus at Bus Stops on Days of Early Closure & Late Opening

	Fridays & Saturdays (Early Closure at 11.00pm)		Saturdays (Late Opening at 8.00am)		Sundays (Late Opening at 8.00am)		Monday (12 Mar 2018) & Wednesday (14 Mar 2018) (Early Closure at 10.30pm)	
West Bound (Towards Bugis)								
From	First Bus	Last Bus	First Bus	Last Bus	First Bus	Last Bus	First Bus	Last Bus
Changi Airport	11.11pm	12.16am	5.36am	8.19am	6.04am	8.19am	10.47pm	12.16am
East Bound (Towards Changi Airport)								
From	First Bus	Last Bus	First Bus	Last Bus	First Bus	Last Bus	First Bus	Last Bus
Bugis	11.19pm	12.32am	6.03am	8.27am	6.31am	8.27am	10.49pm	12.32am

Information on Shuttle Bus Service

- Express 12 provides commuters with a faster connectivity between Changi Airport and the City
- Express 12 will operate between Changi Airport T3 and Bugis MRT station (both bounds) on the following days:
 - On Fridays and Saturdays at 11.00pm (Early Closure)
 - On Saturdays and Sundays at 8.00am (Late Opening)
 - On 12 and 14 Mar at 10.30pm (Early Closure)
- Frequency for Express 12 is 15 - 18 minutes
- Fares for shuttle bus services will follow the same fare structure as trains
- Commuters planning to connect to train services at Bugis MRT station (DTL) are advised to check train services timings, as the shuttle bus service may not connect to the last train departing the station



Information is correct at time of print.

For information on shuttle bus services, please contact the SMRT Customer Hotline at 1800-336-8900 from 7.30am to 8.00pm daily. Passengers may also approach the service staff on site or visit www.smrt.com.sg for more details.

EXPRESS 13

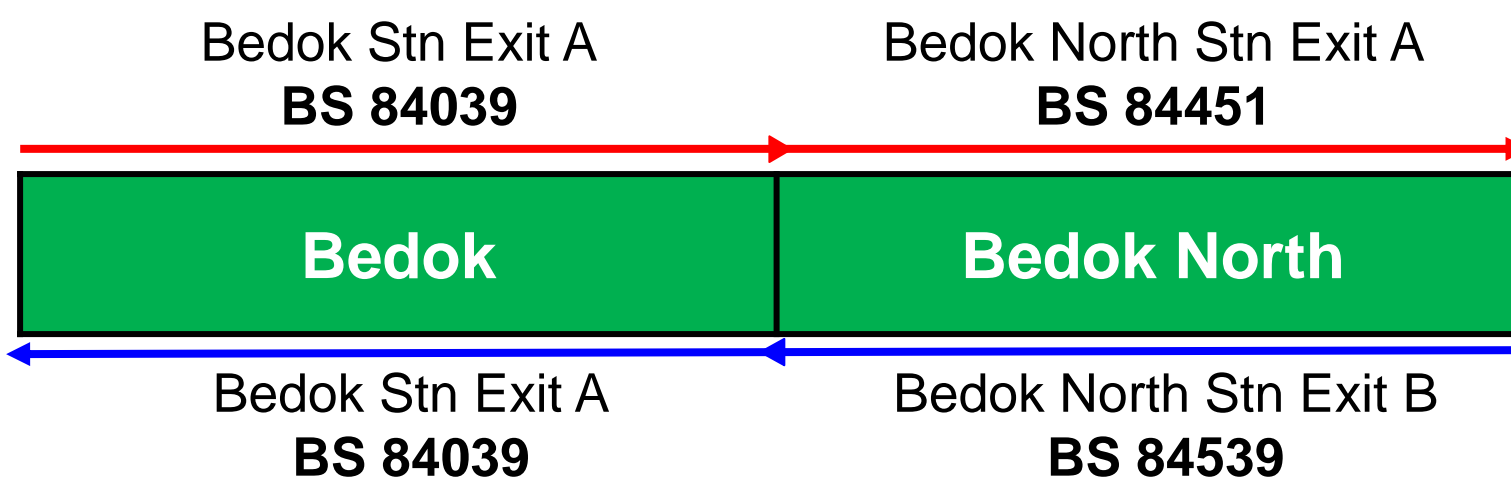
BEDOK – BEDOK NORTH (BOTH BOUNDS)

EAST-WEST LINE / DOWNTOWN LINE

Every Friday, Saturday & Sunday from 2 Mar 2018 to 1 Apr 2018 and
on 12 Mar 2018 (Monday) & 14 Mar 2018 (Wednesday)

Express 13 will serve the following bus stops:

▶ Towards Bedok North
◀ Towards Bedok



Arrival Time of First & Last Bus at Bus Stops on Days of Early Closure & Late Opening

	Fridays & Saturdays (Early Closure at 11.00pm)	Saturdays (Late Opening at 8.00am)	Sundays (Late Opening at 8.00am)	Monday (12 Mar 2018) & Wednesday (14 Mar 2018) (Early Closure at 10.30pm)				
Towards Bedok North								
From	First Bus	Last Bus	First Bus	Last Bus	First Bus	Last Bus	First Bus	Last Bus
Bedok	10.47pm	1.17am	5.39am	8.06am	6.05am	8.06am	10.17pm	1.17am
Towards Bedok								
From	First Bus	Last Bus	First Bus	Last Bus	First Bus	Last Bus	First Bus	Last Bus
Bedok North	11.05pm	12.38am	5.57am	8.24am	6.23am	8.24am	10.35pm	12.38am

Information on Shuttle Bus Service

- Express 13 provides commuters with a faster connectivity between Bedok MRT station and Downtown Line via Bedok North MRT station
- Express 13 will operate between Bedok MRT station and Bedok North MRT station on the following days:
 - On Fridays and Saturdays at 11.00pm (Early Closure)
 - On Saturdays and Sundays at 8.00am (Late Opening)
 - On 12 and 14 Mar at 10.30pm (Early Closure)
- Frequency for Express 13 is 18 – 20 minutes
- Fares for shuttle bus services will follow the same fare structure as trains
- Commuters planning to connect to train services at Bedok North MRT station (DTL) are advised to check train services timings, as the shuttle bus service may not connect to the last train departing the station



Information is correct at time of print.

For information on shuttle bus services, please contact the SMRT Customer Hotline at 1800-336-8900 from 7.30am to 8.00pm daily. Passengers may also approach the service staff on site or visit www.smrt.com.sg for more details.

EXPRESS 15

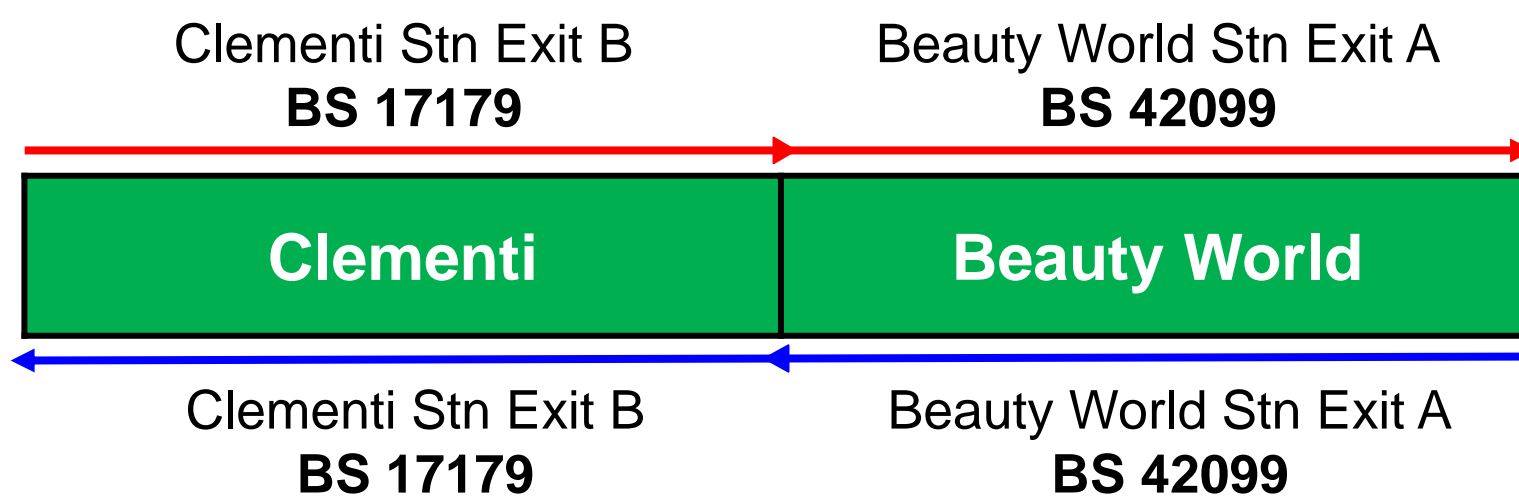
CLEMENTI – BEAUTY WORLD (BOTH BOUNDS)

EAST-WEST LINE / DOWNTOWN LINE

Every Friday, Saturday & Sunday from 2 Mar 2018 to 1 Apr 2018
and on 12 Mar 2018 (Monday) & 14 Mar 2018 (Wednesday)

Express 15 will serve the following bus stops:

▶ Towards Beauty World
◀ Towards Clementi



Arrival Time of First & Last Bus at Bus Stops on Days of Early Closure & Late Opening

	Fridays & Saturdays (Early Closure at 11.00pm)		Saturdays (Late Opening at 8.00am)		Sundays (Late Opening at 8.00am)		Monday (12 Mar 2018) & Wednesday (14 Mar 2018) (Early Closure at 10.30pm)	
Towards Beauty World								
From	First Bus	Last Bus	First Bus	Last Bus	First Bus	Last Bus	First Bus	Last Bus
Clementi	10.53pm	1.22am	5.38am	8.02am	6.06am	8.02am	10.23pm	1.22am
Towards Clementi								
From	First Bus	Last Bus	First Bus	Last Bus	First Bus	Last Bus	First Bus	Last Bus
Beauty World	11.10pm	12.50am	5.57am	8.21am	6.25am	8.21am	10.40pm	12.50am

Information on Shuttle Bus Service

- Express 15 provides commuters with a faster connectivity between Clementi MRT station and Downtown Line via Beauty World MRT station
- Express 15 will operate between Clementi MRT station and Beauty World MRT station on the following days:
 - On Fridays and Saturdays at 11.00pm (Early Closure)
 - On Saturdays and Sundays at 8.00am (Late Opening)
 - On 12 and 14 Mar at 10.30pm (Early Closure)
- Frequency for Express 15 is 18 – 20 minutes
- Fares for shuttle bus services will follow the same fare structure as trains
- Commuters planning to connect to train services at Beauty World MRT station (DTL) are advised to check train services timings, as the shuttle bus service may not connect to the last train departing the station



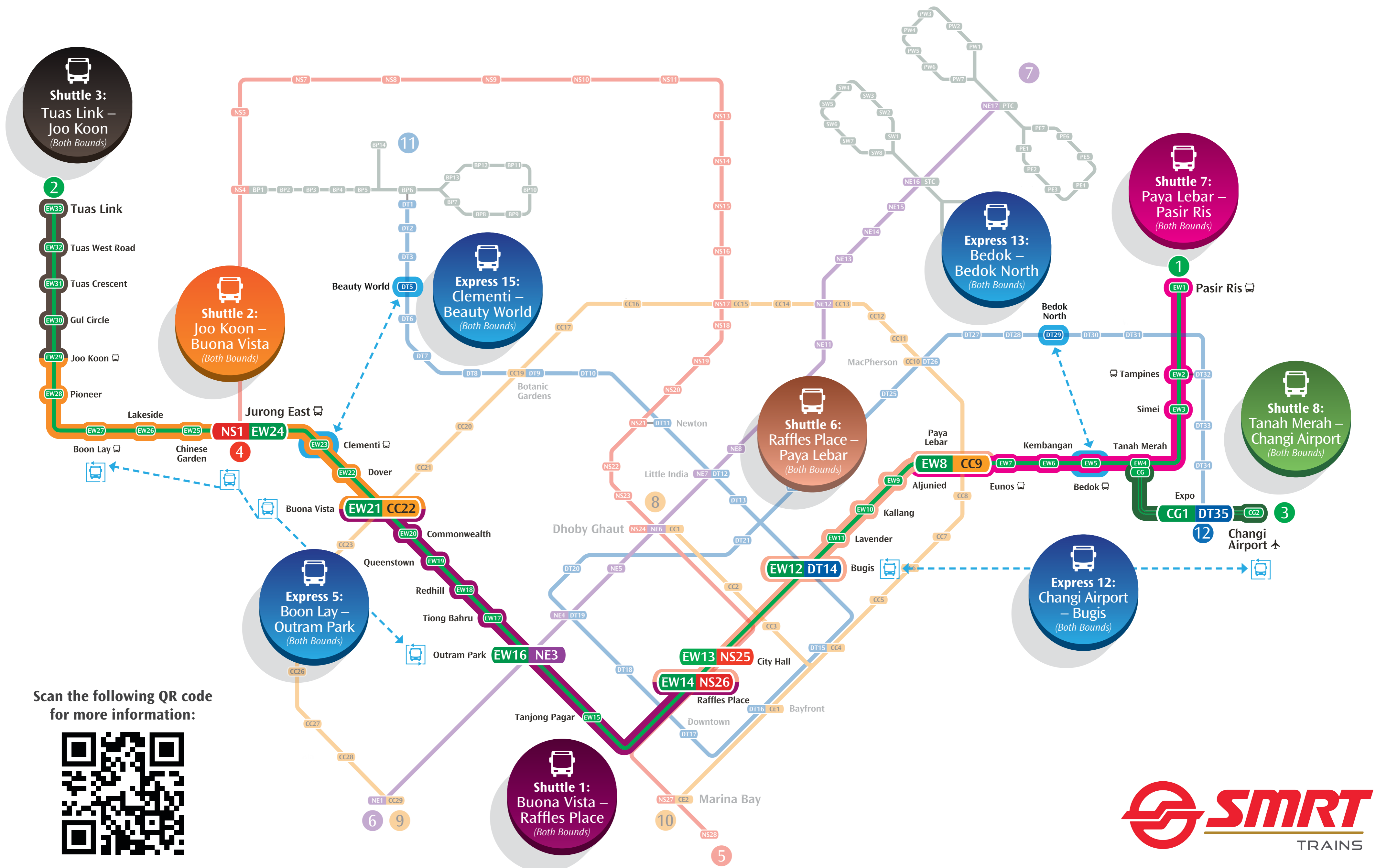
Information is correct at time of print.

For information on shuttle bus services, please contact the SMRT Customer Hotline at 1800-336-8900 from 7.30am to 8.00pm daily. Passengers may also approach the service staff on site or visit www.smrt.com.sg for more details.

Alternative Travel Plans for Shortened Operating Hours

on **EWL** from **2 March** to **1 April 2018**

Please cater for additional travel time when using the shuttle bus services. Commuters travelling longer distances should plan their journeys using other operational MRT lines, or seek alternative travel options, for faster connections.



Scan the following QR code for more information:

